

# 2020

## Annual Report



Pathways **to→** Independence



# IMPACT

167

Participants



391

Calendar Event  
Social Growth



84

Participant  
Planned Events  
Social Focus



49

Social College  
Classes



97%

Parents report skill application at home



88%

Retention

100%

Family Satisfaction

*"Seeing my daughter grown and thrive since joining Pathways makes me feel so happy, and has helped to alleviate worries about her future." Laure, Parent*



# PROGRAMS

## Social College

Social College is a series of discussions and activities focusing on participant-identified social topics.

## Social Growth

Social Growth focuses on increasing positive social experiences, expanding social circles, elevating self-confidence and improving self-esteem through supported leisure programming.

## Social Focus

Social Focus offers participant led small group interactions with staff support for planning and execution.

## GAP

GAP Services consist of 1:1 training on social and related topics that impact the lives of participants.





87%

Participants report more robust social networks



Feast to Friendship

96%

Participant Satisfaction

83%

Participants' Increased Independence

*"Through Pathways, I've learned to let go of what everyone thinks of me and focus on connections with friends." Allaina, Pathways Participant*





# REVENUE

\$517,386

43%

Contributions

40%

Grants

10%

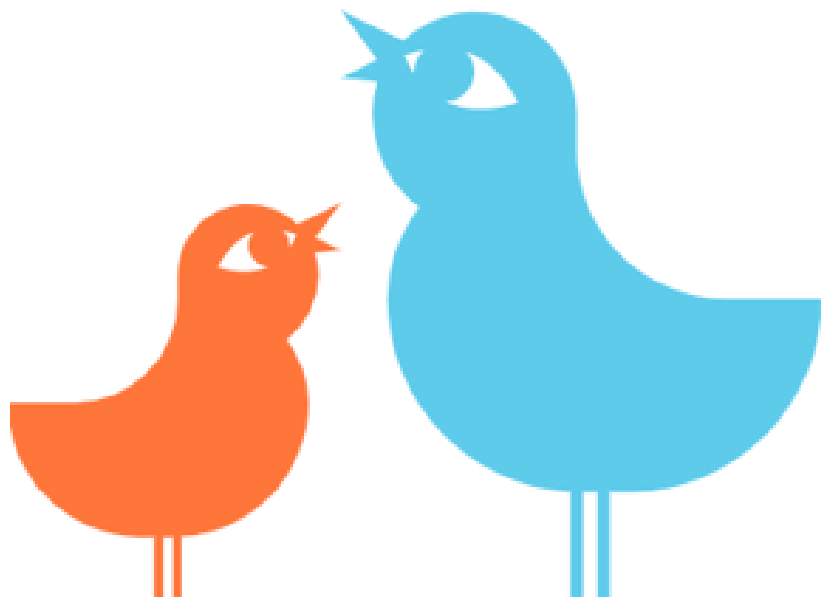
Fees

7%

Special Events

## Our PROMISE

We empower individuals with complex cognitive disabilities to make connections that build independent, fulfilling lives.





95%

Participants with Social Skill goals maintained or improved their skills



*"I feel like I am more confident, more willing to greet people, talk about different topics ask questions and make small talk." Michael, Pathways Participant*





# EXPENSE

\$527,895

80%

Program

11%

Fundraising

9%

Administration

## Our MISSION

Pathways to Independence supports the development of skills that positively impact the lives of individuals with disabilities who seek greater independence and social success.





# FINANCIAL POSITION

	2020	2019
<b>ASSETS</b>		
Current assets		
Cash and cash equivalents	\$ 334,886	\$ 283,743
Investments	703,512	717,768
Accounts receivable	17,408	10,081
Due from related party	1,352	
Other assets	8,786	6,391
Total current assets	<u>1,065,944</u>	<u>1,017,983</u>
Noncurrent assets		
Fixed assets, net	1,194	7,152
Total noncurrent assets	<u>1,194</u>	<u>7,152</u>
Total assets	<u>\$ 1,067,138</u>	<u>\$ 1,025,135</u>
<b>LIABILITIES AND NET ASSETS</b>		
<b>LIABILITIES</b>		
Accounts payable	\$ 567	\$ 5,467
Credit card payable	7,433	5,854
Deferred revenue	20,550	19,550
Note Payable	61,500	
Accrued vacation and payroll	27,383	24,864
Total Liabilities	<u>117,433</u>	<u>55,735</u>
<b>NET ASSETS</b>		
Unrestricted	949,705	929,400
Temporarily restricted	-	40,000
Permanently restricted	-	-
Total net assets	<u>949,705</u>	<u>969,400</u>
Total liabilities and net assets	<u>\$ 1,067,138</u>	<u>\$ 1,025,135</u>



# Pathways to Independence

11457 Olde Cabin Road, Suite 235  
St. Louis, MO 63141

314.863.0202  
[www.ptistl.org](http://www.ptistl.org)

## Board of Directors

Gary Deeken - President  
Bill Klemm - Vice President  
Mike Lewis - Treasurer  
Josh Menacher - Secretary

Stephanie Milner - Member  
Keith Jacob - Member  
Ellen Harmon - Member  
Holly Firestine - Member  
Laure Hullverson - Member  
Bill Keller - Member  
Jason Looney - Member

## Funding Partners

